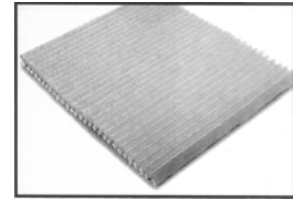
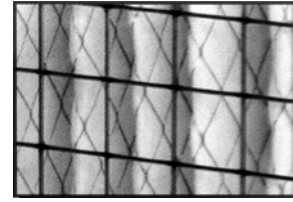




# FILTRATION GROUP

## CLASS 1 PLEATED AIR FILTER AND ELEMENTS

- High capacity pleated design offers greater dust holding capacity
- Longer service life means lower operating costs
- Available as complete filter or element only
- Two grades of media with nominal efficiencies of 40% and 60%
- UL900 Class 1 Listed



### DESCRIPTION

The Aerostar Class 1 Pleated filters and elements incorporate an ultrafine fiberglass media available in both 40% and 60% nominal efficiencies. The media is bonded to a metal grid on the air leaving side, preventing fluttering and maintaining uniformity of the pleats. The media pack is bonded to a heavy-duty galvanized steel frame to prevent air by-pass. A galvanized welded wire mesh is bonded to the downstream side of the frame for added media pack support.

### BENEFITS

Rigid metal frame construction combined with the performance of ultrafine fiberglass media results in a high performing product that is UL900 Class 1 listed. The availability of two different efficiencies ensures that the desired performance is achieved in a wide range of applications. The high dust holding capacity of these products reduces the life cycle costs of filtration applications that use Class 1 filters.

### APPLICATIONS

These filters are used in commercial and industrial applications where fire codes require using Class 1 listed products. These filters can be used without modification in almost any side-access filter housing or built-up filter bank. Class 1 pleated filters and elements, when used as pre-filters, will add substantially to the life of more expensive high-efficiency filters.

PART NO.	ELEMENT ONLY PART NO.	NOMINAL SIZE**	ACTUAL SIZES***			RATED AIRFLOW CAPACITY (cfm)		INITIAL RESISTANCE		RECOMMENDED FINAL RESISTANCE* ("w.g.)	MEDIA AREA (sq. ft.)
			HEIGHT	WIDTH	DEPTH	MEDIUM	HIGH	MEDIUM	HIGH		

#### 60% EFFICIENCY

14372	16306	12 x 24 x 2	11 3/8	23 3/8	1 3/4	750	1000	.35	.54	1.0	9.0
14373	16307	16 x 20 x 2	15 1/2	19 1/2	1 3/4	825	1100	.35	.54	1.0	10.1
14374	16308	16 x 25 x 2	15 1/2	24 1/2	1 3/4	1050	1400	.35	.54	1.0	12.6
14375	16309	20 x 20 x 2	19 1/2	19 1/2	1 3/4	1050	1400	.35	.54	1.0	12.6
14376	16310	20 x 25 x 2	19 1/2	24 1/2	1 3/4	1300	1750	.35	.54	1.0	15.7
14378	16311	24 x 24 x 2	23 3/8	23 3/8	1 3/4	1500	2000	.35	.54	1.0	18.1

#### 40% EFFICIENCY

14379	16312	12 x 24 x 2	11 3/8	23 3/8	1 3/4	750	1000	.32	.49	1.0	9.0
14380	16313	16 x 20 x 2	15 1/2	19 1/2	1 3/4	825	1100	.32	.49	1.0	10.1
14381	16314	16 x 25 x 2	15 1/2	24 1/2	1 3/4	1050	1400	.32	.49	1.0	12.6
14382	16315	20 x 20 x 2	19 1/2	19 1/2	1 3/4	1050	1400	.32	.49	1.0	12.6
14383	16316	20 x 25 x 2	19 1/2	24 1/2	1 3/4	1300	1750	.32	.49	1.0	15.7
14384	16317	24 x 24 x 2	23 3/8	23 3/8	1 3/4	1500	2000	.32	.49	1.0	18.1

\*Recommended final resistance. System may dictate a lower change-out point.

\*\*1" and 4" depth filters and elements are available upon request.

\*\*\*Actual sizes do not apply to elements due to their flexibility.

#### FILTER MEDIA AREA

FILTER DEPTH	PLEATS PER LINEAR FT.	SQ. FT. OF MEDIA PER SQ. FT. OF FACE AREA
2"	15	4.525

#### FEET PER MINUTE (fpm)

FILTER DEPTH	MEDIUM VELOCITY	HIGH VELOCITY
2"	375	500

DISTRIBUTED BY:



# FLORENCE FILTER CORPORATION

"30 Years of Filter Excellence"

www.florencefilter.com

530 W. Manville • Compton • California 90220  
(310) 637-1137 • FAX (310) 631-4323 • (800) 776-2021