

Flo-Disposables

1/2", 1" and 2" FRAMED AIR FILTERS
available in
FIBERGLASS AND POLYESTER

Florence Filter Corporation builds industrial-grade filters for heavy work loads. Flo-Disposables can be relied on for better performance in any application where disposable filters are recommended. Flo-Disposables represent the very best quality in materials and workmanship.

High Density Media

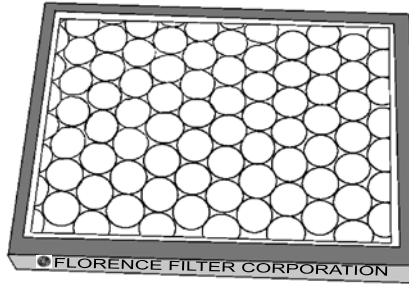
Tackifier

Heavy Duty Frame

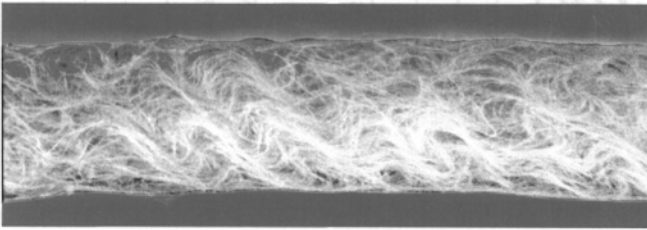
Protective Tape

Choice of Efficiencies

3 Thicknesses

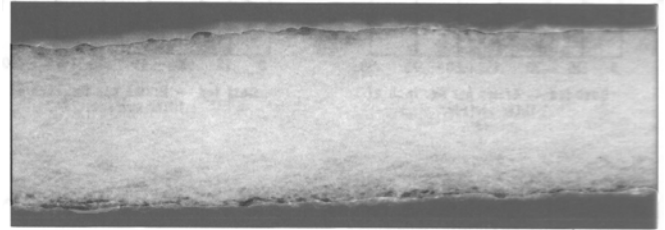


ENGINEERING DATA AND SPECIFICATIONS



FIBERGLASS

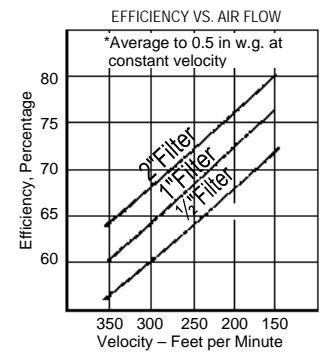
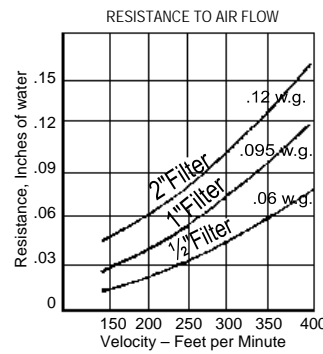
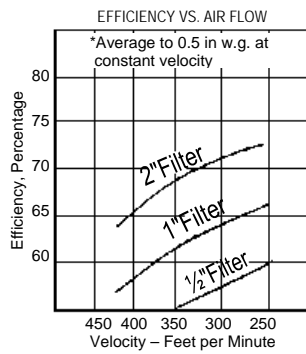
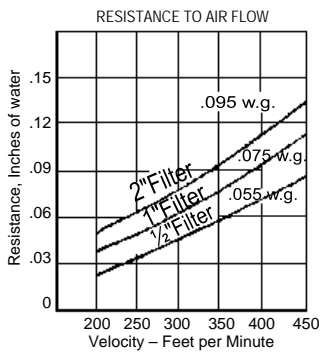
Fiberglass Flo-Disposable filters, manufactured by Florence Filter Corporation, are built from progressive, high density glass of very small diameter continuous fiber for greater dust holding capacity that will not face load. Larger contaminants load in the front and smaller ones load from the spun glass backing. This creates depth-loading. A tackifier traps contaminants in the filter media and helps destroy germs and odor-causing bacteria. The tackifier will not dry out while retaining its adhesive quality. Florence Filter disposable framing is constructed of a heavy grade, 28 mill, durable, water-resistant chipboard. Metal grids on both sides are stapled to the frame for absolute assurance of rigidity and are never heat sealed, glued, taped or sewn. This allows full confidence in Florence Filter disposables for industrial applications. Florence Filter disposables are always sealed with a weatherproof tape. This construction with stapled framing allows for full thickness, tolerance and strength throughout. The specifically engineered tape closes the frame on each edge and corner and will not crack, separate or pull apart. The tape also indicates air flow direction, correct size and adds the finishing touch for a brilliant appearance in bold colors. Actual dimensions of Florence Filter glass disposables exceed all the stringent requirements as to initial pressure drop, arrestance, efficiency, and filtering capacity required in Fed. Spec. F-F-310a.



POLYESTER

Florence Filter polyester framed disposables are built with specially-developed polyester fibers bonded together to form an interlocking pattern of tiny dirt traps. Progressive density from front of medium to rear will trap larger particles in the front and smaller ones in the denser backing. Polyester disposables are dry. The fibers will not splinter and become airborne. Polyester efficiency exceeds that of fiberglass. Florence Filter polyester disposable framing is constructed of a heavy grade, 28 mill, durable, water-resistant chipboard. Metal grids on both sides are always stapled to the frame for absolute assurance of rigidity and are never heat sealed, glued, taped or sewn. This allows full confidence in Florence Filter polyester disposables for industrial applications. Florence Filter disposables are always sealed with a weatherproof tape. This construction with stapled framing allows for full thickness, tolerance and strength throughout. The specifically engineered tape closes the frame on each edge and corner and will not crack, separate or pull apart. The tape, also indicates air flow direction, correct size and adds the finishing touch for a brilliant appearance in bold colors. Actual dimensions of polyester disposables measure plus 0", minus 1/2" for all standard sizes on length and width, and plus 0", minus 1/8" for all thickness. Florence Filter polyester disposables exceed all the stringent requirements as to initial pressure drop, arrestance, efficiency and filtering capacity required in Fed. Spec. F-F-310a.

Florence Filter disposables meet UL specification requirements.



FIBERGLASS

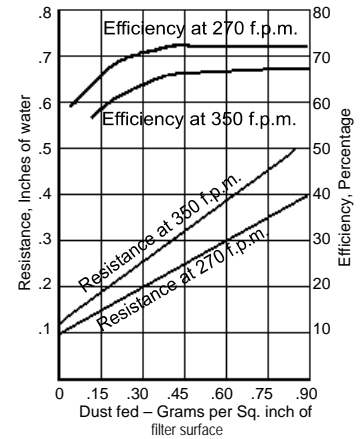
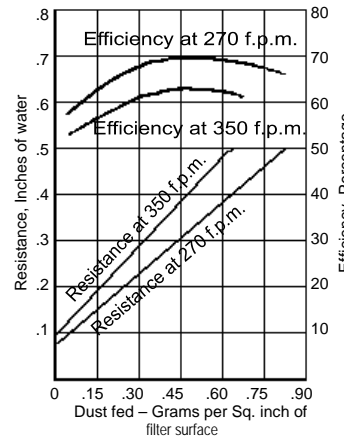
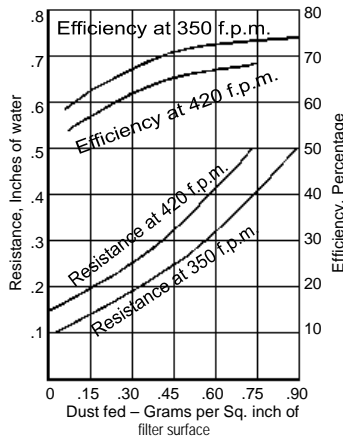
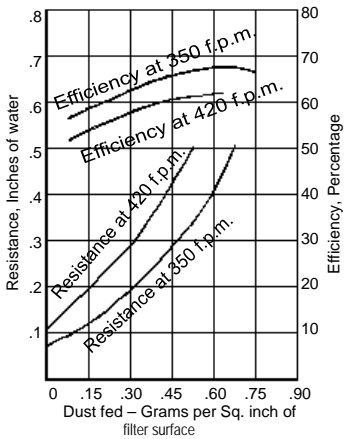
POLYESTER

EFFICIENCY AND RESISTANCE VS. DUST LOAD (Constant Velocity) One Inch Filter

EFFICIENCY AND RESISTANCE VS. DUST LOAD (Constant Velocity) Two Inch Filter

EFFICIENCY AND RESISTANCE VS. DUST LOAD (Constant Velocity) One Inch Filter

EFFICIENCY AND RESISTANCE VS. DUST LOAD (Constant Velocity) Two Inch Filter



DATA SUMMARY

	Fiberglass		Polyester	
Initial Static Pressure (in. w.g.) (¹ final)	1/2"	.06 (.30 ¹)	1/2"	.10 (.40 ¹)
	1"	.08 (.40 ¹)	1"	.15 (.50 ¹)
	2"	.12 (.45 ¹)	2"	.28 (.60 ¹)
Efficiency (NBS Atmospheric)	1/2"	6%	1/2"	10%
	1"	8%	1"	15%
	2"	12%	2"	20%
Dust Holding Capacity (grams per sq. ft.)	1/2"	100	1/2"	125
	1"	118	1"	135
	2"	130	2"	140
Dust Catching Adhesive (grams per sq. ft.) (¹ adhesive optional)	1/2"	1	1/2"	dry (2 ¹)
	1"	2	1"	dry (3 ¹)
	2"	2	2"	dry (4 ¹)

Manufactured by:



FLORENCE FILTER CORPORATION

"Over 35 Years of Filter Excellence"

www.florencefilter.com

530 W. Manville Street • Compton • California 90220

(310) 637-1137 • FAX (310) 631-4323 • Outside California (800) 776-2021